

# **SERVICE PARTS CATALOGUE**

**CATALOGO PARTI DI RICAMBIO**

**CATALOGUE DES PIECES DETACHEES**

**ERSATZTEILKATALOG**

**CATALOGO DE PIEZAS DE REPUESTO**

**CATALOGO DE PECAS SOBRESSALENTES**

**RESERVEDELSKATALOG**

**ONDERDELENLIJST**

**Skid Steer/Compact Track Loader  
L175 / C175**

Print No. 87659705

Replaces 87364206



# **SERVICE PARTS CATALOGUE**

**CATALOGO PARTI DI RICAMBIO**

**CATALOGUE DES PIECES DETACHEES**

**ERSATZTEILKATALOG**

**CATALOGO DE PIEZAS DE REPUESTO**

**CATALOGO DE PECAS SOBRESSALENTES**

**RESERVEDELSKATALOG**

**ONDERDELENLIJST**

Skid Steer/Compact Track Loader  
L175 / C175

Print No. 87659705

Replaces 87364206



**NEW HOLLAND**

**CONSTRUCTION**



---

# PARTS CATALOG

---

## SKID STEER COMPACT TRACK LOADER

---

L175

C175

---



BD07E006

### TABLE OF CONTENTS

- General Information
- Section 2 – Engine
- Section 3 – Fuel System
- Section 4 – Electrical System
- Section 6 – Power train
- Section 7 – Brakes
- Section 8 – Hydraulics
- Section 9 – Chassis/Attachments
- Index

CNH America LLC reserves the right to make improvements in design or changes in specifications at any time without incurring any obligation to install them on units previously sold.

All data given in this publication is subject to production variations. Dimensions and weights are only approximate. Illustrations do not necessarily show products in standard condition. For exact information about any particular product, please consult your Dealer.

REVISION HISTORY			
Issue	Issue Date	Applicable Machines	Remarks
First Edition	01Nov 05	L175/C175 Skid Steer/Compact Track Loader	87364206 ML
Revision 1	01Oct 07	L175/C175 Skid Steer/Compact Track Loader	87659705 ML

---

## TABLE OF CONTENTS

---

02-01	RADIATOR - COOLANT RECOVERY SYSTEM
02-02	AIR CLEANER - ENGINE
02-03	EXHAUST SYSTEM
02-04	MUFFLER - ASPIRATED, IF USED
02-04A	MUFFLER - ASPIRATED, IF USED
02-05	ENGINE, MOUNTING - L175 NA BSN N7M470553, L175 EU BSN N7M468035; C175 NA BSN N7M466429, C175 EU BSN
02-05A	ENGINE, MOUNTING - L175 NA ASN N7M470553, L175 EU ASN N7M468035; C175 NA ASN N7M466429, C175 EU ASN
02-06	BLOCK HEATER KIT
02-07	CYLINDER BLOCK - OIL FILTER - L175 NA BSN N7M470553, L175 EU BSN N7M468035; C175 NA BSN N7M466429, C
02-08	CYLINDER HEAD - L175 NA BSN N7M470553, L175 EU BSN N7M468035; C175 NA BSN N7M466429, C175 EU BSN N7M
02-09	VALVE COVER AND CRANKSHAFT PULLEY - L175 NA BSN N7M470553, L175 EU BSN N7M468035; C175 NA BSN N7M466
02-10	ROCKER ARMS
02-11	CAMSHAFT - L175 NA BSN N7M470553, L175 EU BSN N7M468035; C175 NA BSN N7M466429, C175 EU BSN N7M46796
02-12	CRANKSHAFT AND PISTONS
02-13	INTAKE MANIFOLD
02-14	TURBOCHARGER
02-15	TIMING GEAR CASE, GOVERNOR - L175 NA BSN N7M470553, L175 EU BSN N7M468035; C175 NA BSN N7M466429, C1
02-16	OIL PAN
02-17	OIL PUMP AND SUCTION FILTER - L175 NA BSN N7M470553, L175 EU BSN N7M468035; C175 NA BSN N7M466429, C
02-18	WATER PUMP
02-19	FLYWHEEL, BELL HOUSING - L175 NA BSN N7M470553, L175 EU BSN N7M468035; C175 NA BSN N7M466429, C175 E
02-20	CYLINDER BLOCK - OIL FILTER - L175 NA ASN N7M470553, L175 EU ASN N7M468035; C175 NA ASN N7M466429, C
02-21	CYLINDER HEAD - L175 NA ASN N7M470553, L175 EU ASN N7M468035; C175 NA ASN N7M466429, C175 EU ASN N7M
02-22	VALVE COVER AND CRANKSHAFT PULLEY - L175 NA ASN N7M470553, L175 EU ASN N7M468035; C175 NA ASN N7M466
02-23	CAMSHAFT - L175 NA ASN N7M470553, L175 EU ASN N7M468035; C175 NA ASN N7M466429, C175 EU ASN N7M46796
02-24	TIMING GEAR CASE, GOVERNOR - L175 NA ASN N7M470553, L175 EU ASN N7M468035; C175 NA ASN N7M466429, C1
02-25	OIL PUMP & SUCTION FILTER - L175 NA ASN N7M470553, L175 EU ASN N7M468035; C175 NA ASN N7M466429, C17
02-26	FLYWHEEL, BELL HOUSING - L175 NA ASN N7M470553, L175 EU ASN N7M468035; C175 NA ASN N7M466429, C175 E
03-01	FUEL TANK
03-02	THROTTLE CONTROL, RIGHT HAND
03-02A	THROTTLE CONTROL - DELUXE CAB
03-03	FUEL INJECTION SYSTEM - L175 NA BSN N7M470553, L175 EU BSN N7M468035; C175 NA BSN N7M466429, C175 EU
03-03A	FUEL INJECTION SYSTEM - L175 NA ASN N7M470553, L175 EU ASN N7M468035; C175 NA ASN N7M466429, C175 EU
03-04	INJECTOR - L175 NA BSN N7M470553, L175 EU BSN N7M468035; C175 NA BSN N7M466429, C175 EU BSN N7M46796
03-04A	INJECTOR - L175 NA ASN N7M470553, L175 EU ASN N7M468035; C175 NA ASN N7M466429, C175 EU ASN N7M46796

---

## TABLE OF CONTENTS

---

04-01	STARTER
04-01A	BATTERY - CABLES
04-02	ALTERNATOR ASSY
04-03	ALTERNATOR MOUNTING
04-04	ELECTRIC - CAB
04-05	ELECTRIC - CAB (EUROPE)
04-05A	ELECTRIC CAB - LEFT HAND CONSOLE, DELUXE CAB
04-05B	ELECTRIC CAB - RIGHT HAND CONSOLE, DELUXE CAB
04-05C	ELECTRIC CAB - MAIN HARNESS AND FUSE BLOCK, DELUXE CAB
04-05D	ELECTRIC CAB, HARNESS AND FUSE BLOCK (EUROPE) - DELUXE CAB
04-05E	ELECTRIC CAB, DELUXE CAB
04-05F	ELECTRIC CAB - LIGHTS, DELUXE CAB
04-05G	ELECTRIC CAB, TURN SIGNALS - DELUXE CAB
04-06	ELECTRIC - CAB, 4-WAY FLASHERS
04-07	ELECTRIC - ENGINE
04-08	ELECTRIC - MAIN
04-09	ELECTRIC - MAIN
04-10	ELECTRIC - CHASSIS
04-10A	ELECTRIC, CHASSIS - DELUXE CAB
04-10B	ELECTRIC, CHASSIS - DELUXE CAB
04-10C	ELECTRICAL, CHASSIS - DELUXE CAB
04-11	BACKUP ALARM
04-12	BACK-UP ALARM, MODELS WITH PILOT CONTROL; IF USED
04-12A	BACK UP ALARM - MODELS WITH PILOT CONTROL; IF USED
04-12B	REMOTE JUMP START
04-13	HARNESS - TWO SPEED
04-14	HORN ASSEMBLY AND HARNESS
04-14A	HORN - DELUXE CAB
04-15	ELECTRIC, MOUNTING PLATE
04-15A	ELECTRIC, MOUNTING PLATE - DELUXE CAB
04-16	BOOM, ON-ROAD LIGHTS (EUROPE) IF USED
04-16A	BOOM, ON-ROAD LIGHTS (EUROPE) IF USED
04-17	FRONT HEADLAMP, ON-ROAD (EUROPE)
04-18	REAR LIGHT BAR, ON-ROAD (EUROPE)
04-19	BOOM, ON ROAD WITH TURN SIGNALS
04-20	FRONT HEADLAMP WITH TURN SIGNALS, ON ROAD (EUROPE)
04-20A	FRONT HEADLAMP - DELUXE CAB
04-21	REAR LIGHT BAR, BRAKE AND TURN SIGNALS; IF USED (EUROPE)
04-21A	REAR LIGHT BAR, BRAKE AND TURN SIGNALS; IF USED (EUROPE)
04-21B	REAR LIGHT ASSEMBLY - DELUXE CAB
04-21C	FRONT AND REAR WORK LIGHTS - DELUXE CAB
04-22	PILOT CONTROL HARNESS
04-23	ELECTRIC POWER KIT
04-24	HORN KIT
04-25	4-WAY FLASHER KIT
04-26	BEACON LIGHT KIT
04-26A	BEACON KIT, DELUXE CAB
04-27	WARNING BEACON LIGHT
04-28	LOADER LOCKOUT, PILOT CONTROLS (EUROPE)
04-29	HARNESS - EH AUXILIARY JUMPER
04-30	HEAT AND AIR CONDITIONING CONTROLS
06-01	TRANSMISSION CENTERING
06-02	HYDROSTATICS - PUMP TO DRIVE MOTORS, SINGLE SPEED
06-03	HYDROSTATICS - PUMP TO MANIFOLD, SINGLE SPEED
06-04	HYDROSTATICS - PUMP TO DRIVE MOTORS, TWO SPEED

---

## TABLE OF CONTENTS

---

06-05	HYDROSTATICS - PUMP TO MANIFOLD, TWO SPEED
06-06	HYDROSTATICS - TWO SPEED
06-07	HYDROSTATICS - PUMP TO DRIVE MOTORS (C175)
06-08	HYDROSTATICS - TWO SPEED/BRAKE (C175)
06-09	HYDROSTATICS - TWO SPEED, VALVE ASSY
06-10	HYDROSTATICS - TWO SPEED, VALVE ASSY (C175)
06-11	HYDROSTATICS - BRAKE/TWO SPEED VALVE, MODELS WITH PILOT CONTROL
06-12	HYDROSTATICS - PILOT CONTROL TO PUMP
06-12A	HYDROSTATICS - JOYSTICK VALVE KITS, ISO PATTERN
06-13	HYDROSTATICS - PUMP TO MANIFOLD, MODELS WITH PILOT CONTROL
06-14	HYDROSTATICS - PUMP TO DRIVE MOTORS, MODELS WITH PILOT CONTROL
06-15	HYDROSTATICS - PUMP TO DRIVE MOTORS, MODELS WITH PILOT CONTROL
06-16	HYDROSTATICS - PUMP TO DRIVE MOTORS, 2 SPEED - MODELS WITH PILOT CONTROL
06-17	HYDROSTATICS - STANDARD FLOW, TWO SPEED - MODELS WITH PILOT CONTROL
06-18	HYDROSTATICS - PUMP TO DRIVE MOTORS (C175), MODELS WITH PILOT CONTROL
06-19	HYDROSTATICS - PUMP TO MANIFOLD (C175), MODELS WITH PILOT CONTROL
06-20	HYDROSTATICS - PUMP AND FITTINGS (C175), MODELS WITH PILOT CONTROL
06-21	HYDROSTATICS - BRAKE/TWO SPEED VALVE (C175), MODELS WITH PILOT CONTROL
06-22	TANDEM PUMP ASSEMBLY - SINGLE SPEED
06-23	PISTON PUMP, REAR - SINGLE SPEED
06-24	PISTON PUMP, FRONT - SINGLE SPEED
06-25	PISTON PUMP, CENTER MANIFOLD - SINGLE SPEED
06-26	TANDEM PUMP ASSEMBLY - TWO SPEED
06-27	PISTON PUMP, FRONT- TWO SPEED
06-28	PISTON PUMP, REAR - TWO SPEED
06-29	PISTON PUMP, CENTER - TWO SPEED
06-30	REXROTH PUMP AA20, ONE SPEED, PILOT CONTROLS
06-30A	REXROTH PUMP, TWO SPEED, PILOT CONTROLS
06-31	PRESSURE RELIEF VALVE
06-32	PRESSURE RELIEF VALVE
06-33	INTERNAL GEAR PUMP
06-34	ROTARY GROUP, RIGHT HAND ROTATION
06-35	CONTROL, HYDRAULIC
06-35A	CONTROL, HYDRAULIC
06-36	CONTROL CARTRIDGE WITH ORIFICE
06-36A	CONTROL CARTRIDGE WITH ORIFICE
06-37	LOCKING ELEMENTS
06-38	ROTARY GROUP, LEFT HAND ROTATION
06-38A	ROTARY GROUP, LEFT HAND ROTATION
06-40	MOTOR ASSEMBLY, SINGLE SPEED - REXROTH
06-41	MOTOR ASSEMBLY, SINGLE SPEED - REXROTH
06-42	MOTOR ASSEMBLY, SINGLE SPEED - REXROTH
06-43	MOTOR ASSEMBLY, TWO SPEED - REXROTH
06-44	MOTOR ASSEMBLY, TWO SPEED - REXROTH
06-45	MOTOR ASSEMBLY, TWO SPEED - REXROTH
06-46	MOTOR ASSEMBLY, TWO SPEED TRACK DRIVE (C175)
06-49	HYDRAULIC GEAR PUMP
06-50	HYDRAULIC GEAR PUMP
06-51	HYDRAULIC GEAR PUMP (HIGH FLOW)
06-52	HYDRAULIC GEAR PUMP (HIGH FLOW)
06-53	HYDRAULIC GEAR PUMP (HIGH FLOW)

---

# TABLE OF CONTENTS

---

06-54	MOUNTING - PUMP SUPPORT, PILOT CONTROL
06-55	FINAL DRIVE (L175)
06-56	FINAL DRIVE (C175)
06-57	WHEELS
06-58	TRACK - RUBBER
07-01	BRAKE SYSTEM - HYDRAULIC
07-02	BRAKE - ON ROAD, EUROPE
07-03	BRAKE - ON ROAD, PILOT CONTROL
07-04	BRAKE SYSTEM - HYDRAULIC, MODELS WITH PILOT CONTROL
08-01	CONTROL VALVE HYDRAULICS
08-02	CONTROL VALVE HYDRAULICS
08-03	CONTROL VALVE
08-04	BUCKET HYDRAULICS, STANDARD
08-05	BOOM HYDRAULICS, STANDARD/HIGH FLOW
08-06	BUCKET HYDRAULICS, HIGH FLOW
08-07	AUXILIARY HYDRAULICS, STANDARD
08-08	AUXILIARY HYDRAULICS, HIGH FLOW
08-09	HYDRAULICS - MOUNTING PLATE; IF USED
08-09A	HYDRAULICS - MOUNTING PLATE; IF USED
08-10	CYLINDER ASSY - MOUNTING PLATE
08-11	VALVE ASSY - MOUNTING PLATE
08-12	BOOM HYDRAULICS - MOUNTING PLATE, HIGH FLOW
08-12A	BOOM HYDRAULICS - MOUNTING PLATE, HIGH FLOW (IF USED)
08-13	BOOM HYDRAULICS - MOUNTING PLATE, STANDARD FLOW
08-13A	BOOM HYDRAULICS - MOUNTING PLATE, STANDARD FLOW (IF USED)
08-14	FILTER AND RESERVOIR
08-15	FILTER ASSY
08-16	FILTER AND RESERVOIR - MODELS WITH PILOT CONTROL
08-16A	FILTER AND RESERVOIR - MODELS WITH PILOT CONTROL, C175 EUROPE
08-18	HYDRAULICS - HIGH FLOW
08-19	VALVE ASSY - HIGH FLOW
08-19A	VALVE ASSY - SECONDARY AUXILIARY
08-20	HYDRAULICS - HAND CONTROL RH, MODELS WITH PILOT CONTROL
08-21	HYDRAULICS - PILOT CONTROL TO CONTROL VALVE
08-21B	HYDRAULICS - JOYSTICK VALVE KITS, ISO PATTERN, RIGHT HAND
08-22	CONTROL VALVE HYDRAULICS, MODELS WITH PILOT CONTROL
08-22A	CONTROL VALVE HYDRAULICS, MODELS WITH PILOT CONTROL, EH AUX CONTROL
08-23	CONTROL VALVE, MODELS WITH PILOT CONTROL
08-23A	CONTROL VALVE, MODELS WITH PILOT CONTROL, EH AUX CONTROL
08-23B	CONTROL VALVE EH PLUMBING, MODELS WITH PILOT CONTROL, EH AUX CONTROL
08-24	CONTROL VALVE, SEAL REPLACEMENT KITS
08-25	CONTROL VALVE, SEAL KIT
08-26	CONTROL VALVE, SPOOL END GROUP P. O.
08-27	CONTROL VALVE, SPOOL END GROUP P. O.
08-28	CONTROL VALVE - SPOOL END GROUP, DETENT
08-29	CONTROL VALVE, CHECK VALVE GROUP
08-30	CONTROL VALVE, SPOOL END GROUP P. O.
08-31	CONTROL VALVE, PLUGS AND VALVES
08-37	HYDRAULICS, STANDARD FLOW, ONE SPEED - MODELS WITH PILOT CONTROL
08-38	HYDRAULICS, STANDARD FLOW, TWO SPEED - MODELS WITH PILOT CONTROL
08-39	HYDRAULICS, HIGH FLOW, ONE SPEED - MODELS WITH PILOT CONTROL; IF USED
08-39A	HYDRAULICS, HIGH FLOW, TWO SPEED - PILOT CONTROL, EH AUX; IF USED
08-40	HYDRAULICS, HIGH FLOW, TWO SPEED - MODELS WITH PILOT CONTROL; IF USED



---

## TABLE OF CONTENTS

---

08-40A	HYDRAULICS, HIGH FLOW, TWO SPEED - MODELS WITH PILOT CONTROL; IF USED
08-41	CONTROL VALVE 87583689 - SEAL REPLACEMENT KITS
08-41A	CONTROL VALVE 87653270 - SEAL REPLACEMENT KITS
08-42	CONTROL VALVE - SEAL KIT
08-43	CONTROL VALVE - MAIN RELIEF VALVE
08-44	CONTROL VALVE, PLUGS AND VALVES
08-45	CONTROL VALVE, CHECK VALVE GROUP
08-46	CONTROL VALVE - SPOOL END GROUP, DETENT
08-47	CONTROL VALVE, SPOOL END GROUP P. O.
08-48	CONTROL VALVE, SPOOL END GROUP P. O.
08-49	CONTROL VALVE, SPOOL END GROUP P. O.
08-50	CONTROL VALVE - SPOOL END GROUP
08-51	CONTROL VALVE - CHECK VALVE GROUP
08-52	CONTROL VALVE, SPOOL END GROUP EHPV
08-53	CONTROL VALVE, SPOOL END GROUP EHPV
09-01	CHASSIS (L175)
09-01A	CHASSIS (C175)
09-02	MOUNTING PLATE
09-03	BOOM
09-04	BOOM LOCK
09-04A	CLEARANCE KIT
09-05	BUCKET CYLINDER
09-06	BOOM CYLINDER
09-06A	BOOM CYLINDER
09-07	BUCKETS - LOADER, DIRT / FOUNDRY
09-08	BUCKETS - LOADER, EXTENDED LOW PROFILE
09-09	BUCKETS - LOADER, UTILITY / LIGHT MATERIAL
09-10	BUCKETS - LOADER, MANURE / SLURRY
09-10A	BUCKET - CUTTING EDGE
09-10B	BUCKET, CUTTING EDGE KIT
09-11	PALLET FORK
09-12	FENDERS (L175)
09-13	FENDERS (C175)
09-14	THRESHOLD - REAR WINDOW
09-15	CAB
09-15A	CAB - DELUXE CAB
09-15B	CAB - INTERIOR TRIM, MANUAL CONTROLS, DELUXE CAB
09-15C	CAB - INTERIOR TRIM, PILOT CONTROLS, DELUXE CAB
09-16	CAB - HEADLINER
09-17	CAB - HEADLINER, WITH HEAT AND AIR CONDITIONING
09-17A	CAB - HEADLINER, DELUXE CAB
09-17B	CAB HEADLINER, DELUXE OPEN CAB
09-18	CAB - HEATER SYSTEM
09-18A	CAB - HEATER SYSTEM, DELUXE CAB
09-19	CAB - HEATER
09-20	CAB - HEATER AND AIR CONDITIONING
09-20A	CAB - HEATER AND AIR CONDITIONING SYSTEM, DELUXE CAB
09-21	CAB - AIR CONDITIONING ASSY
09-21A	CAB - HEATER AND AIR CONDITIONING UNIT
09-22	CONDENSER UNIT - AIR CONDITIONING
09-23	COMPRESSOR ASSEMBLY - AIR CONDITIONING
09-24	THRESHOLD & CAB WINDOWS (EUROPE)
09-25	CAB DOOR
09-26	CAB DOOR - WIPER
09-27	CAB DOOR

---

## TABLE OF CONTENTS

---

09-28	DEMOLITION DOOR
09-28A	CAB - DEMOLITION DOOR KIT, DELUXE CAB
09-28B	CAB - DEMOLITION DOOR AND FRAME, DELUXE CAB
09-28C	CAB - DEMOLITION DOOR, DELUXE CAB
09-28D	DEMOLITION DOOR KIT, LESS DOOR
09-29	CAB - DOOR AND FRAME, DELUXE CAB
09-29A	CAB - DOOR KIT, DELUXE CAB
09-29B	CAB - DOOR, DELUXE CAB
09-29C	CAB - DOOR FRAME, DELUXE CAB
09-30	DOOR - SWITCH ASSY
09-31	CAB - WINDOWS
09-31A	CAB - WINDOWS AND HEADLINER, DELUXE CAB
09-32	CAB - SIDE WINDOW, RIGHT HAND
09-32A	CAB - SIDE WINDOW, RIGHT HAND, DELUXE CAB
09-32B	CAB - SIDE WINDOW, RIGHT HAND, DELUXE CAB
09-32C	CAB - SIDE WINDOW, RIGHT HAND ASSY, DELUXE CAB
09-32D	CAB - SIDE WINDOW, RIGHT HAND ASSY, DELUXE CAB
09-33	CAB - SIDE WINDOW, LEFT HAND
09-33A	CAB - SIDE WINDOW, LEFT HAND, DELUXE CAB
09-33B	CAB - TOP WINDOW, DELUXE CAB
09-33C	CAB - SIDE WINDOW ASSY, LEFT HAND, DELUXE CAB
09-33D	CAB - SIDE WINDOW, LEFT HAND ASSY, DELUXE CAB
09-33E	CAB - SIDE WINDOW, LEFT HAND ASSY, DELUXE CAB
09-34	CAB - FLOOR PLATE KIT
09-35	DOOR, REAR
09-36	REAR HOOD
09-37	HANDLES - CONTROL
09-38	HANDLES
09-38A	HANDLES, MODELS WITH PILOT CONTROL, AUX CONTROL
09-39	HANDLES - CONTROL, MODELS WITH PILOT CONTROL
09-39A	HANDLES - CONTROL, MODELS WITH PILOT CONTROL, EH AUX CONTROL
09-40	HAND CONTROL - LEVERS
09-41	HAND CONTROL - KICK PANEL, RH
09-42	HAND CONTROL - KICK PANEL, LH
09-43	HAND CONTROL - PEDALS
09-43A	BOOM & BUCKET HAND CONTROL KIT
09-43B	BOOM & BUCKET HAND CONTROL, PEDALS - KIT
09-44	BOOM & BUCKET FOOT CONTROL, HYDROSTATIC LEVERS
09-45	BOOM & BUCKET FOOT CONTROL, KICK PANEL, RH
09-46	BOOM & BUCKET FOOT CONTROL, KICK PANEL, LH
09-47	BOOM & BUCKET FOOT CONTROL, PEDALS
09-48	BOOM & BUCKET HAND CONTROL, TUNNEL COMPONENTS
09-49	BOOM & BUCKET HAND CONTROL KIT
09-50	FOOT THROTTLE KIT
09-51	TUNNEL COMPONENTS - MODELS WITH PILOT CONTROL
09-51A	TUNNEL COMPONENTS - DELUXE CAB
09-51B	TUNNEL COMPONENTS - MODELS WITH PILOT CONTROL, EH AUX CONTROL
09-52	PEDALS - MODELS WITH PILOT CONTROL
09-52A	PEDALS - MODELS WITH PILOT CONTROL, EH AUX CONTROL
09-53	HAND CONTROL - PILOT CONTROL, UPPER RH
09-54	HAND CONTROL - PILOT CONTROL, UPPER RH
09-55	HAND CONTROL - PILOT CONTROL, UPPER LH
09-56	HAND CONTROL - PILOT CONTROL, UPPER LH
09-57	ACOUSTICAL EQUIPMENT
09-58	ACOUSTICAL EQUIPMENT

---

## TABLE OF CONTENTS

---

09-58A	ACOUSTICAL EQUIPMENT
09-58B	ACOUSTICAL EQUIPMENT - MUFFLER WRAP
09-58C	ACOUSTICAL EQUIPMENT - SOUND KIT
09-59	SEAT ASSY, STANDARD
09-60	SEAT, STANDARD
09-61	SEAT ASSY, SUSPENSION
09-62	SEAT, SUSPENSION
09-63	SEAT, SUSPENSION - KIT
09-64	SEAT BELT, STANDARD
09-65	SEAT BELT, SHOULDER BELT
09-66	SEAT BELT, 3 IN. COMBINATION - IF USED
09-66A	SEAT BELT, LAP BELT
09-67	SEATBELT KITS
09-68	ARMREST - MODELS WITH PILOT CONTROL
09-68A	ARMREST - DELUXE CAB
09-69	FOREARM REST
09-70	ARM PAD & ARMREST KIT, STANDARD SEAT
09-71	FIRE EXTINGUISHER & INSIDE REAR-VIEW MIRROR
09-71A	MANUAL COMPARTMENT LOCK & FIRE EXTINGUISHER, EUROPE
09-72	COUNTERWEIGHT
09-72A	CAB JACK KIT
09-73	DECALS - NORTH AMERICA
09-74	DECALS - NORTH AMERICA/EUROPE
09-75	DECALS - NORTH AMERICA
09-76	DECALS - EUROPE
09-77	DECALS - EUROPE
09-78	DECALS - EUROPE
09-79	DECALS - PILOT CONTROLS
09-80	DECALS - BRAZILIAN PORTUGUESE, CANADIAN FRENCH, LATIN AMERICAN SPANISH
09-81	DECALS - BOOM AND LOAD
09-82	DECALS - CONTROLS (EUROPE)
09-83	DECALS - CONTROLS
09-84	DECALS - DELUXE CAB
09-85	DECALS - DELUXE CAB
09-86	DECALS - DELUXE CAB
09-87	DECALS - 35TH ANNIVERSARY
09-88	SLOW MOVING VEHICLE EMBLEM KIT

---

**NOTES NOTES NOTAS NOTIZEN NOTAS NOTE OPMERKINGEN BEMÆRKNINGER**

---

## GENERAL INFORMATION

### PROPRIETARY NOTICE

The contents of this manual are proprietary data of this company. Reproduction or use of any part for other than the operation and maintenance of our equipment is permissible only if expressly authorized in writing.

Additional copies may be obtained from your dealer. Address requests for copies to your Dealer and refer to the publication part number appearing on the bottom of the rear catalog cover or on the title page.

### COMPANY POLICY

Company policy, which is one of continuous improvement, reserves the right to change prices and to make changes in design and specification at any time without notice and without obligation to modify units previously built.

All data given in this book is subject to production variations. Dimensions and weights are approximate only and the illustrations do not necessarily show machines in standard condition. For exact information about any particular machine please consult your dealer.

### PARTS AND ACCESSORIES

Genuine parts and accessories have been specifically designed for these machines.

We would like to point out that "non-genuine" parts and accessories have NOT been examined and released by the Company. The installation and or use of such products could have negative effects upon the design characteristics of your machine and thereby affect its safety. The company is not liable for any damage caused by the use of "non-genuine" parts and accessories.

### IMPROVEMENTS

We are continually striving to improve our products. We reserve the right to make improvements or changes when it becomes practical and possible to do so, without incurring any obligation to make changes or additions to the equipment sold previously.

### MODEL CODES

The range of machines listed may not be available in all countries or markets therefore, for the latest information consult your local dealer.

### OWNER ASSISTANCE

We want you to be completely satisfied with your investment. Normally any problems with your equipment will be handled by your dealer's Service Department; however, misunderstandings can occur. If your problem has not been handled to your satisfaction, we suggest the following:

1. Contact the owner or General Manager of the dealership, explain the problem, and request assistance. When additional assistance is needed, your dealer has direct access to our office.
2. Provide your dealer with:
  - Your Name, Address, and Telephone number
  - Machine Model and Serial Number
  - Dealership Name and Address
  - Machine purchase date and amount of use
  - Nature of problem

Be aware that your problem will likely be resolved in the dealership using the dealer's facilities, equipment, and personnel. So it is important that your initial contact be with the dealer.

### SPARE PARTS

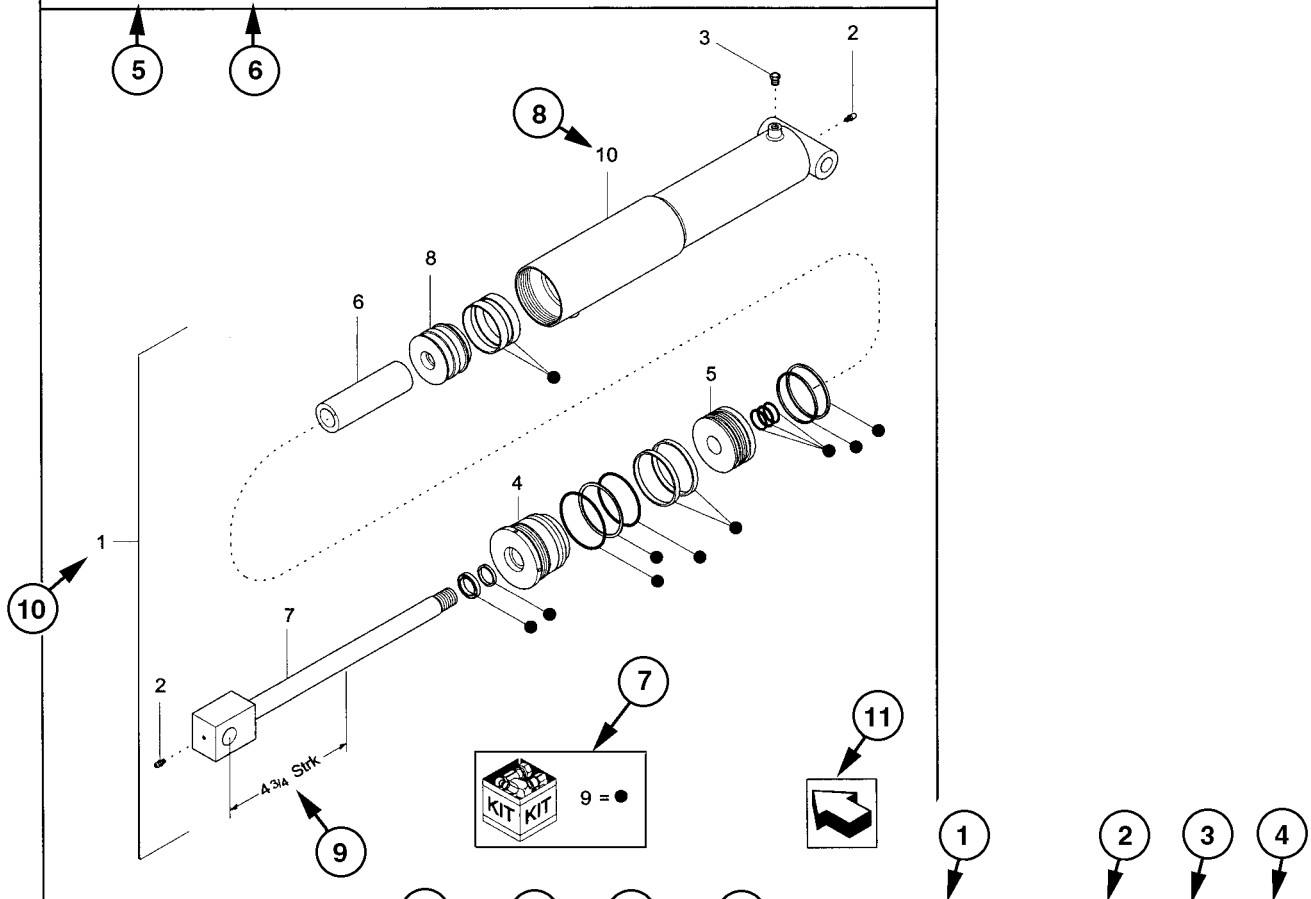
To maintain operating efficiency, use original spare parts.

When ordering parts, give the following information:

- Machine Model
- Machine and Engine Serial Numbers
- Part Number from the Parts Catalog

1	08-01	01	p1	01/02
---	-------	----	----	-------

HYDRAULIC CYLINDER - 396137A2



08-01	01	p1	01/02
-------	----	----	-------

HYDRAULIC CYLINDER - 396137A2

REF	FN	PART NUMBER	YR/SN	QTY	DESCRIPTION
1	1	396137A2	BTW 01/85 & 02/02	1	CYLINDER ASSY. 4-3/4 in strk, Inc 2-10
2		31-95	Before 01/85	2	FITTING
2		219-8	From 01/85	2	NIPPLE, LUBE Grease, 1/4 tpr x 17/32
3		{402475A2}		1	BREATHER
4		402474A1		1	CAP CYLINDER END
5		402468A1	BSN JJC0189199	1	PISTON ROD/GLAND
5		145221C3	ASN JJC0189200	1	PISTON
6		402471A1		1	SPACER
7		402473A1		1	ROD, PISTON
8		402469A1		1	PISTON ROD/GLAND
9		402476A1		1	PACKAGE, SEALS
10		NSS		1	NOT SERVICED SEPARAT CASE ASSEMBLY

(1) 08-20

STANDARD	MODELS
----------	--------

## HOW TO USE YOUR PARTS CATALOG

1. Figure Number
2. Sequence Code within the Figure Number
3. Page Number within the Sequence Code
4. Date of Printing (month / year)
5. Figure Description
6. General information regarding the figure
7. Parts supplied in repair kits per symbol reference
8. Figure call-out of the part number (REF)
9. Technical specifications relating to the part indicated
10. Figure call-out includes bracketed items, the included items may also be listed in the additional description area
11. Orientation - Arrow indicates front of the machine
12. Footnote - Additional information relating to the part number. In this example, 08-20 equals another figure that this part is shown on
13. Part Number
  - NSS = Not Serviced Separately (Non-serviced parts)
  - Bracketed numbers = not available as service parts in this market
14. Not Available as service part in this market
15. YR/SN
  - Year
    - Before 01/85 = Part valid for production January 1985 and before
    - From 01/85 = Part valid for production from January 1985 and after
    - BTW 01/85 & 02/02 = Part valid for machines produced between January 1985 and February 2002.
  - Serial Number (P.I.N.)
    - BSN JJC0268800 = Part valid for serial number JJC0268800 and below
    - ASN JJC0268800 = Part valid for serial number JJC0268800 and above
    - BTW JJC0178000 & JJC0179000 = Part valid for serial numbers between JJC0178000 & JJC0179000
16. Total Quantity of the Part referred to in the page. The quantity can be replaced by the following indications:
  - AR = As Required
  - X = As required
17. Part Description
18. Additional description of the part to help confirm identification
19. Figure Notes
20. Model Number(s)

### RIGHT-HAND AND LEFT-HAND

The reference to right-hand and left-hand in this catalog is identified by the operator standing at the rear of the basic unit (without rear attachment), looking toward the front of the machine (in normal forward travel).

For pages covering any machine attachments, right-hand and left-hand are defined by the operator sitting in the position for proper operation of the attachment.

### DIMENSIONS

Metric and U.S. hardware dimensions do not show the numeric designations of standard coarse threads. A number following a semi colon (;) is the class or grade of hardware. A comma (,) represents the decimal point (.) used in U.S. dimensions.

## EXPLANATION OF ABBREVIATIONS

AC	Alternating Current
adj	adjustable
amp	ampere
AR	As required
ASN	Serial number and after P.I.N. and after

blkhd	bulkhead
br	branch
BSN	before Serial number before P.I.N.
BTW	between

cc	cubic centimetre
cl	class
cmprsn	compression
cn pt	cone point
cp pt	cup point
CRS	Chrome Alloy Steel
CST	Carbon Steel
cu yd	cubic yard

DC	Direct Current
deg	degree
dg pt	dog point
dia	diameter
dr type	drive type

fc	face
fc sl	face seal
fem	female
fem PT	female pipe thread
fl	flare
flat pt	flat point
ft	feet or foot

ga	gauge
gal	gallon or gallons
gpm	gallons per minute
gr	grade

hd	head
hdg pt	half dog point
hp	horsepower
ID	inside diameter
in	inch or inches
Incl.	Includes
inv fl	inverted flare

K	kilo
kg	kilogram
km/h	kilometers per hour

L	litre
lb	pounds
lb-ft	pound-foot
lg	long
LH	left-hand
LH thd	left-hand thread

M	(prefix) metric thread size
m	metre
ml	milliliter
mm	millimetre

NF	National Fine
No.	number
NPT	National Pipe Thread
NS	National Super Fine

OD	outside diameter
ohm	electrical unit of resistance
Or	O-ring
ORB	O-ring boss
ORFS	O-ring face seal
ov cntr	over center
ov pt	oval point
oz	ounce

P	pitch
psi	pounds per square inch
pt	pint
PT	pipe thread

rd	round
rd holes	round holes
RH	right-hand
RH thd	right-hand thread
rpm	revolutions per minute

sl	self-locking
sq	square
SST	Stainless Steel
st	self-tapping
strk	stroke
sw	swivel

T	teeth
thk	thick
tpr	taper
tube OD	tube outside diameter

V	volt or volts
W	watt or watts
X	as required
yd	yard



# GÉNÉRALITÉS

## AVIS DE PROPRIÉTÉ

Les données contenues dans ce manuel constituent la propriété de cette société. Toute reproduction ou utilisation de toute partie de ce manuel à d'autres fins que l'utilisation et l'entretien de notre matériel ne sont permises que si elles sont expressément autorisées par écrit.

Des copies supplémentaires peuvent être obtenues auprès du concessionnaire. Pour obtenir des exemplaires supplémentaires, s'adresser au concessionnaire et donner en référence le numéro de publication imprimé au bas de la couverture arrière de ce manuel ou sur la page de titre.

## POLITIQUE DE LA SOCIÉTÉ

L'entreprise, dont la politique est fondée sur le progrès constant, se réserve le droit de changer ses prix et d'apporter des modifications à la conception et aux caractéristiques du matériel à tout moment, sans préavis et sans obligation de modifier les machines précédemment fabriquées.

Toutes les données qui apparaissent dans le présent manuel peuvent faire l'objet de variations dues aux contraintes de production. Les dimensions et les mesures de poids ne sont qu'approximatives et les machines illustrées ne sont pas nécessairement en état standard. Pour des données précises au sujet d'un modèle de machine en particulier, consulter un concessionnaire agréé.

## PIÈCES ET ACCESSOIRES

Des pièces et des accessoires d'origine ont été conçus spécifiquement pour ces machines.

New Holland souhaite préciser que les pièces et accessoires « non originaux » n'ont PAS été examinés et mis en vente par la société. La pose et l'utilisation de ces produits pourraient s'avérer néfaste pour la conception de la machine et donc altérer ses caractéristiques de sécurité. La compagnie ne peut être tenue responsable des dégâts résultant de l'utilisation de pièces et d'accessoires « non originaux ».

## AMÉLIORATIONS

Nous nous efforçons de sans cesse continuer à améliorer nos produits. Nous nous réservons le droit d'apporter des améliorations ou modifications dès qu'elles s'avèrent pratiques et possibles, sans engagement ni obligation d'apporter des modifications ou des ajouts sur les équipements vendus auparavant.

## CODES DE MODÈLES

Les machines énumérées ne sont peut-être pas toutes disponibles dans tous les pays ou sur tous les marchés ; en conséquence, pour obtenir les informations les plus récentes, consulter le concessionnaire.

## ASSISTANCE AU PROPRIÉTAIRE

Nous souhaitons que vous soyez entièrement satisfait de votre investissement. Tous les problèmes rencontrés lors de l'utilisation de l'équipement sont normalement gérés par le service Entretien des concessionnaires, mais il est possible que des malentendus aient lieu. Si le problème n'a pas été géré de façon satisfaisante, procéder comme suit.

1. Contacter le propriétaire ou le directeur de la concession, expliquer le problème et demander de l'aide. En cas de besoin d'assistance supplémentaire, le concessionnaire peut contacter directement nos bureaux.
2. Fournir au concessionnaire les renseignements suivants :
  - Nom, adresse et numéro de téléphone
  - Modèle de la machine et numéro de série
  - Nom et adresse du concessionnaire
  - Date d'achat et nombre d'heures d'utilisation
  - Nature du problème

Garder à l'esprit le fait que le problème sera très certainement réglé au sein de la concession, à l'aide des infrastructures, des équipements et du personnel du concessionnaire. C'est pourquoi il est important que le premier contact se situe au niveau du concessionnaire.

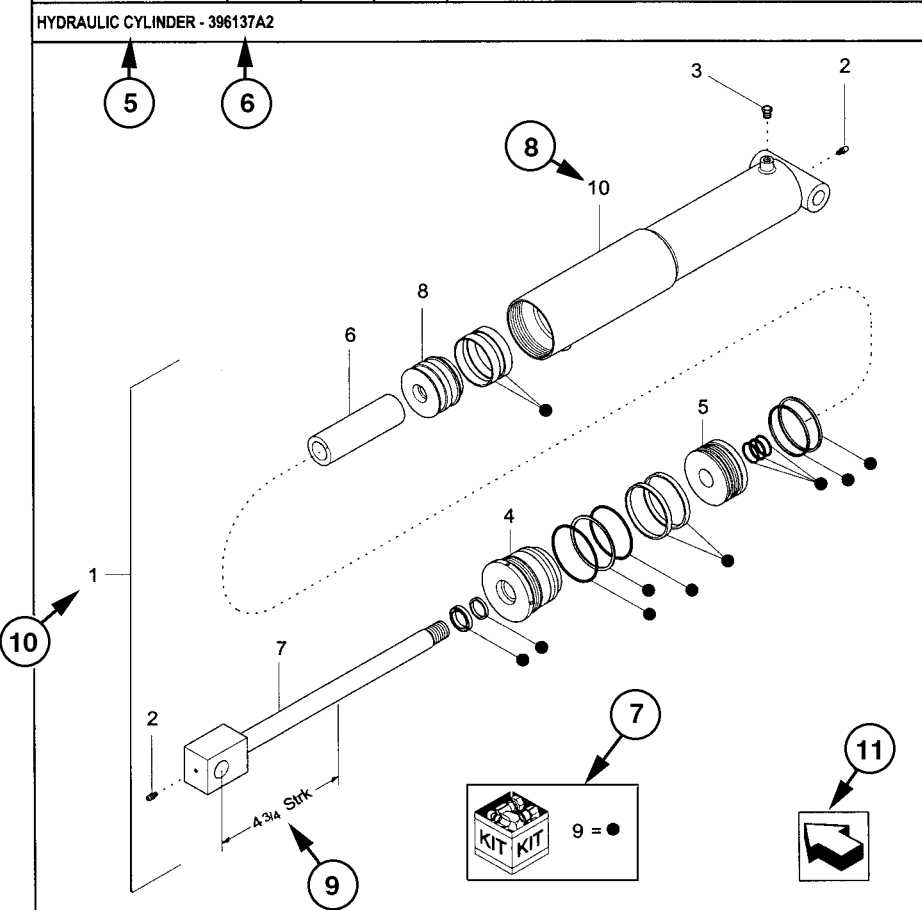
## PIÈCES DÉTACHÉES

Pour maintenir un fonctionnement efficace, utiliser des pièces détachées d'origine.

Lors de la commande de pièces, fournir les informations suivantes.

- Modèle de la machine
- Numéros de série de la machine et du moteur
- Référence de la pièce du catalogue de pièces détachées

1	08-01	01	p1	01/02
	HYDRAULIC CYLINDER - 396137A2			



1	08-01	01	p1	01/02
---	-------	----	----	-------

REF	FN	PART NUMBER	YR/SN	QTY	DESCRIPTION
1	1	396137A2	BTW 01/85 & 02/02	1	CYLINDER ASSY. 4-3/4 in strk, Inc 2-10
2		31-95	Before 01/85	2	FITTING
2		219-8	From 01/85	2	NIPPLE, LUBE Grease, 1/4 tpr x 17/32
3		{402475A2}		1	BREATHER
4		402474A1		1	CAP CYLINDER END
5		402468A1	BSN JJC0189199	1	PISTON ROD/GLAND
5		145221C3	ASN JJC0189200	1	PISTON
6		402471A1		1	SPACER
7		402473A1		1	ROD, PISTON
8		402469A1		1	PISTON ROD/GLAND
9		402476A1		1	PACKAGE, SEALS
10		NSS		1	NOT SERVICED SEPARAT CASE ASSEMBLY
(1)	08-20				

STANDARD	MODELS
----------	--------

## UTILISATION DU CATALOGUE DE PIÈCES

1. Numéro de la figure
2. Code de séquence dans le numéro de la figure
3. Numéro de la page dans le code de séquence
4. Date d'impression (mois/année)
5. Description de la figure
6. Informations générales relatives à la figure
7. Pièces fournies dans les kits de réparation selon référence de symbole
8. Chiffre-référence de la référence
9. Caractéristiques techniques relatives à la pièce indiquée
10. Le chiffre-référence de la figure inclut des articles entre crochets, les articles inclus peuvent aussi être énumérés dans la zone de description additionnelle
11. Orientation – La flèche indique l'avant de la machine
12. Note de pied de page – Informations supplémentaires relatives à la référence. Dans cet exemple, 08-20 correspond à une autre figure où cette pièce est illustrée
13. Référence
  - NSS = pièces sans entretien
  - Numéros entre parenthèses = localement non disponibles comme pièces détachées
14. Localement non disponible comme pièce détachée
15. Année/N° de série
  - Année
    - Avant 01/85 = pièce valable pour la production de janvier 1985 et antérieure
    - À partir de 01/85 = pièce valable pour la production de janvier 1985 et postérieure
    - Entre 01/85 et 02/02 = pièce valable pour les machines produites entre janvier 1985 et février 2002
  - Numéro de série (P.I.N.)
    - BSN JJC0268800 = pièce valable pour les numéros de série JJC0268800 et inférieurs
    - ASN JJC0268800 = pièce valable pour les numéros de série JJC0268800 et supérieurs
    - Entre JJC0178000 et JJC0179000 = pièce valable pour les numéros de série compris entre JJC0178000 et JJC0179000
16. La quantité totale de pièces auxquelles il est fait référence dans cette page. La quantité peut être remplacée par les indications suivantes :
  - AR = Selon besoin
  - X = Selon le besoin
17. Description
18. Description complémentaire de la pièce pour faciliter la confirmation de l'identification
19. Notes de la figure
20. Numéro(s) de modèle

### GAUCHE ET DROIT

La référence aux côtés gauche et droit dans ce catalogue est identifiée par l'opérateur debout à l'arrière de l'unité de base (sans outil arrière), regardant vers l'avant de la machine (en marche avant normale).

Pour les pages concernant les outils de la machine, les côtés droit et gauche sont définis par l'opérateur assis en position correcte de commande de l'outil.

### DIMENSIONS

Les dimensions impériales et métriques ne montrent pas les désignations numériques du filetage standard. Un chiffre suivant un point virgule (;) est la classe ou le grade de la visserie. Une virgule (,) représente le point séparateur décimal (.) du système impérial.

## SIGNIFICATION DES ABRÉVIATIONS

AC	courant alternatif
adj	réglable
amp	ampère
AR	selon le besoin
ASN	numéro de série et supérieur P.I.N. et supérieur

blkhd	cloison
br	branche
BSN	avant numéro de série avant P.I.N.
BTW	entre

cc	centimètre cube
cl	classe
cmprsn	compression
cn pt	bout pointu
cp pt	bout cuvette
CRS	acier en alliage de chrome
CST	acier au carbone
cu yd	verge cube

DC	courant continu
deg	degré
dg pt	bout cylindrique long
dia	diamètre
dr type	type de transmission

fc	face
fc sl	joint à face
fem	femelle
fem PT	filetage de tube femelle
fl	évasement
flat pt	bout plat
ft	pied(s)

ga	jauge
gal	gallon(s)
gpm	gallons par minute
gr	grade

hd	tête
hdg pt	bout cylindrique court
hp	chevaux
ID	diamètre intérieur
in	pouce(s)
Incl.	comprend
inv fl	évasement inversé

K	kilo
kg	kilogramme
km/h	kilomètres/heure

L	litre
lb	livre
lb-ft	livre/pied
lg	long
LH	côté gauche
LH thd	filetage à gauche

M	(préfixe) taille métrique du filetage
m	mètre
ml	millilitre
mm	millimètre

NF	National Fine
No.	n°
NPT	pas de tuyauterie
NS	National Super Fine

OD	diamètre extérieur
ohm	ohm
Or	joint torique
ORB	bossage de joint torique
ORFS	joint torique à face
ov cntr	hypercentrique
ov pt	bout ovale
oz	once

P	pas
psi	livre par pouce carré
pt	pinte
PT	filetage de tuyau

rd	rond
rd holes	trous ronds
RH	droit
RH thd	filetage à droite
rpm	tr/mn

sl	autobloquant
sq	carré
SST	acier inoxydable
st	à auto-tarudage
strk	course
sw	pivot

T	dent
thk	épais
tpr	conique
tube OD	diamètre extérieur de tube

V	volt(s)
W	watt(s)
X	selon le besoin
yd	yard

# INFORMACIÓN GENERAL

## NOTA DE PATENTE

El contenido de este manual es propiedad de esta compañía. La reproducción o el uso de cualquier parte para cualquier otro propósito que no sea el funcionamiento y mantenimiento de nuestro equipo está permitido solamente si se autoriza expresamente por escrito.

Pueden obtenerse copias adicionales en su concesionario. Dirigir sus pedidos a su concesionario y hacer referencia al número de publicación que aparece en la parte inferior de la contraportada o en la cubierta de su manual.

## POLÍTICA DE LA COMPAÑÍA

La política de la compañía, de mejora continua, se reserva el derecho a cambiar los precios y a realizar cambios en el diseño y las especificaciones en cualquier momento sin previo aviso ni obligación de modificar las unidades fabricadas con anterioridad.

Todos los datos que se dan en este libro están sujetos a variaciones de producción. Las dimensiones y los pesos son aproximados solamente y las ilustraciones no muestran necesariamente las máquinas en condiciones estándar. Para información exacta sobre cualquier máquina en particular, ponerse en contacto con el concesionario.

## PIEZAS Y ACCESORIOS

Se han diseñado piezas y accesorios específicamente para estas máquinas.

Quisiéramos señalar que la compañía NO ha examinado y aprobado otras piezas y accesorios "no genuinos". La instalación y/o el uso de tales productos puede tener efectos negativos en las características de diseño de su máquina y, por lo tanto, afectar su seguridad. La compañía no se responsabiliza por los daños causados por el uso de piezas y accesorios "no genuinos".

## MEJORAS

Estamos continuamente intentando mejorar nuestros productos. Se reserva el derecho a mejorar el diseño o realizar cambios cuando resulte práctico y posible llevarlo a cabo, sin incurrir por ello en la obligación de realizar estos cambios o actualizar las unidades vendidas previamente.

## CÓDIGOS DE LOS MODELOS

El rango de las máquinas que se incluyen puede que no esté disponible en todos los países o mercados. Por lo tanto, para obtener la información más actualizada consultar con su concesionario local.

## AYUDA AL PROPIETARIO

Deseamos que esté completamente satisfecho con su inversión. Normalmente, cualquier problema con el equipo, será resuelto por el departamento de mantenimiento del concesionario. Sin embargo, pueden producirse malentendidos. Si el problema no ha sido resuelto a su satisfacción, le sugerimos lo siguiente:

1. Hablar con el propietario o gerente general del concesionario, explicar el problema y solicitar su ayuda. Cuando se necesite de ayuda especial, el concesionario tiene acceso directo con nuestras oficinas.
2. Proporcione al concesionario la siguiente información:
  - Su nombre, dirección y número de teléfono
  - Modelo de la máquina y número de serie
  - Nombre del concesionario y dirección
  - Fecha de compra de la máquina y tiempo de uso
  - Naturaleza del problema

Recuerde que el problema probablemente será resuelto en el concesionario, utilizando las instalaciones, equipo y personal del mismo. Así que es importante que el primer contacto sea con el concesionario.

## PIEZAS DE REPUESTO

Para mantener la eficacia operativa, usar piezas de repuesto originales.

Al pedir piezas, proporcionar la siguiente información:

- Modelo de la máquina
- Números de serie de la máquina y el motor
- Número de pieza del catálogo de piezas

**Thanks very much for your reading,  
Want to get more information,  
Please click here, Then get the complete  
manual**

**JustClickHere** 

**NOTE:**

**If there is no response to click on the link above,  
please download the PDF document first, and then  
click on it.**

**Have any questions please write to me:  
[admin@servicemanualperfect.com](mailto:admin@servicemanualperfect.com)**